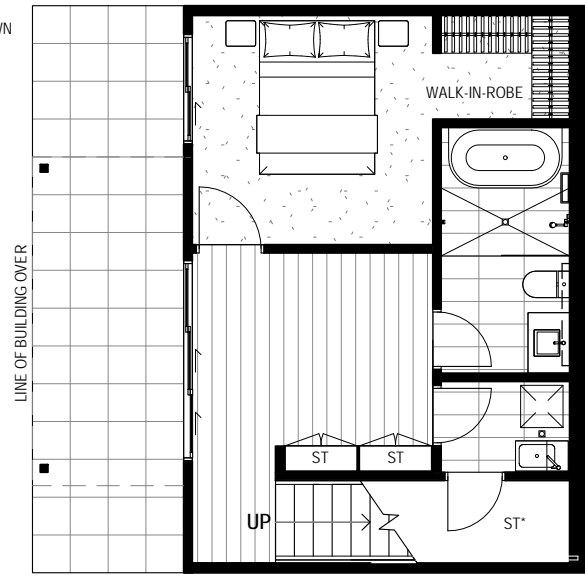


NOTE: BALUSTRADE AND TIMBER STAIR STEP DOWN TO BACKYARD WILL BE PROVIDED AS REQUIRED TO SUIT SITE LEVELS

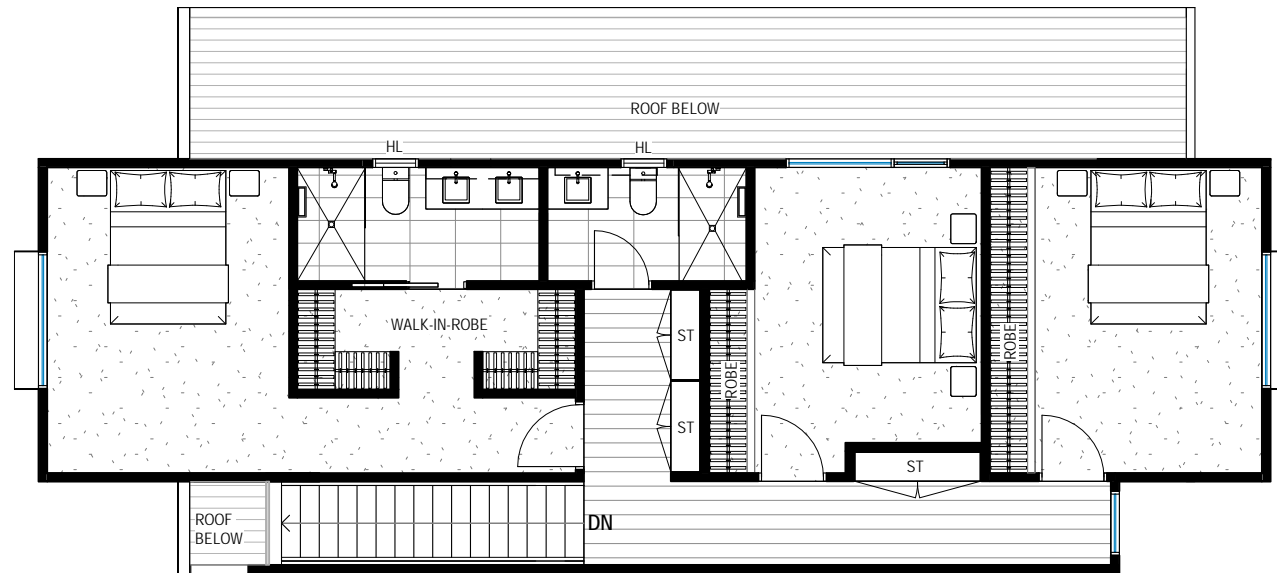
BACKYARD



GROUND FLOOR PLAN



LEVEL 1 FLOOR PLAN



LEVEL 2 FLOOR PLAN

TOWNHOUSE

3028, 3029, 3030, 3031, 3032, 3033, 7002, 7003, 7004, 7005, 7006, 7007, 7008, 7009, 7010, 7011, 7012, 7013

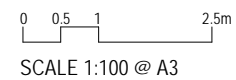
- BIN Wheelle bins storage area
- DW Dishwasher
- FR Fridge Cavity
- HL High level window
- MB Mail Box
- P Pantry
- PS Privacy Screening
- ST Storage
- ST* Low headroom storage

TYPE D
4 BED + 3 BATH

TOTAL	246m²
GROUND FLOOR	40.6m ²
LEVEL 1	59.8m ²
LEVEL 2	83.2m ²
GARAGE	38.7m ²
BALCONY	8.7m ²
BACKYARD PAVED AREA	15.0m ²

- NOTE:
- EXACT LOT SIZE VARIES
 - EXTENT OF LANDSCAPE AND DRIVEWAY SHOWN INDICATIVE
 - LOT SPECIFIC BALUSTRADE AND STAIRS TO BACKYARD NOT SHOWN FOR CLARITY
 - LOT SPECIFIC MIRRORED LAYOUT REFER TO SITE MASTERPLAN
 - BALCONY AND FACADE FINISH REFER TO FACADE TYPE

- While every effort has been made to ensure the information contained herein is correct at the time of issue, the enclosed information is subject to change at any time. This document does not form part of a contract of sale and purchasers should rely upon the contract of sale for all specifications and inclusions. All dimensions shown are indicative only and may vary to "as built".
 - All areas are measured in accordance with the Property Council of Australia Method of Measurement Residential
 - External balcony extents, external door and window configuration varies, refer to floor plates for details



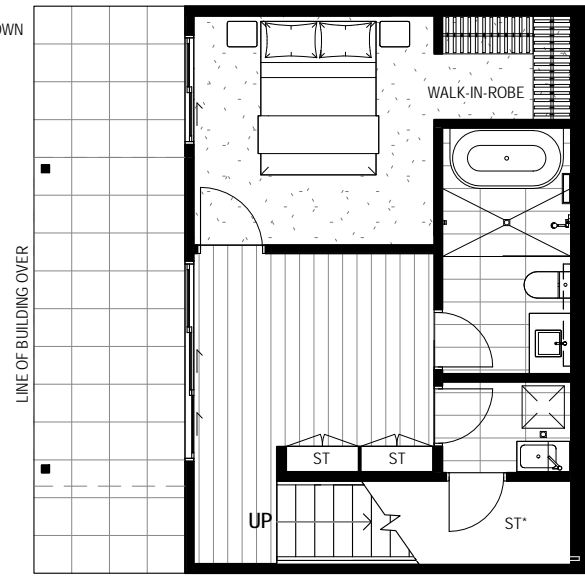
PACE OF SUNSHINE NORTH
322 Duke Street

TOWNHOUSE TYPE D

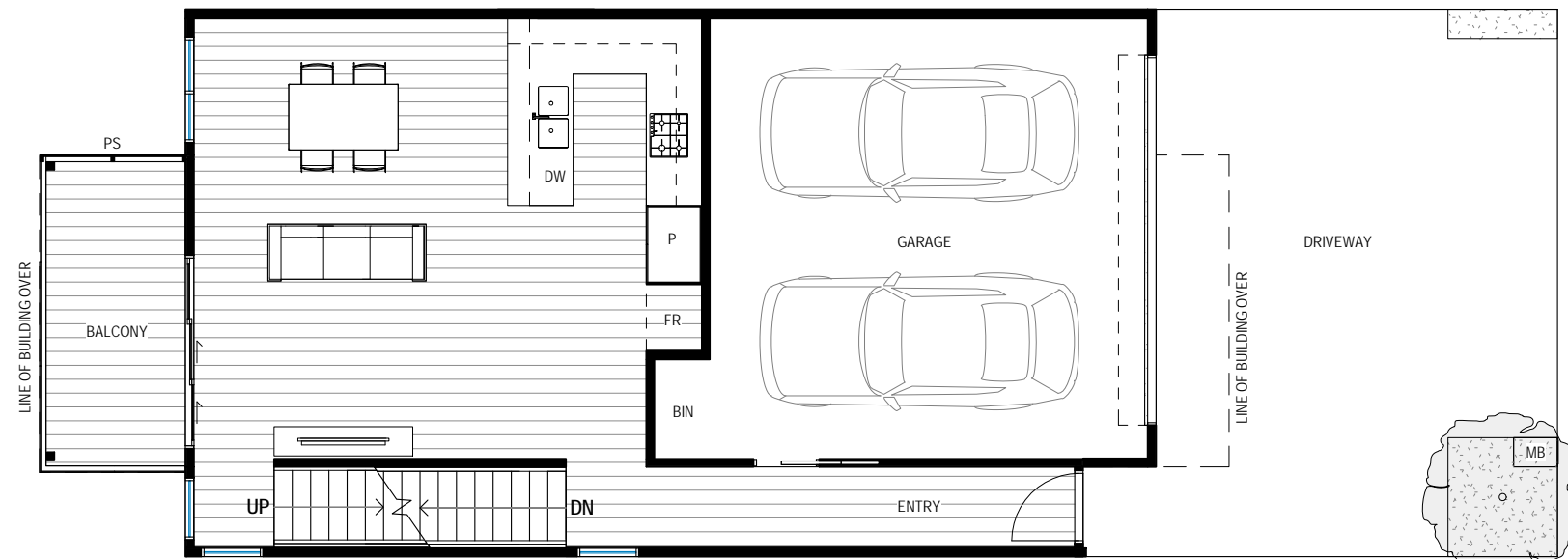
0060
09.07.18

NOTE: BALUSTRADE AND TIMBER STAIR STEP DOWN TO BACKYARD WILL BE PROVIDED AS REQUIRED TO SUIT SITE LEVELS

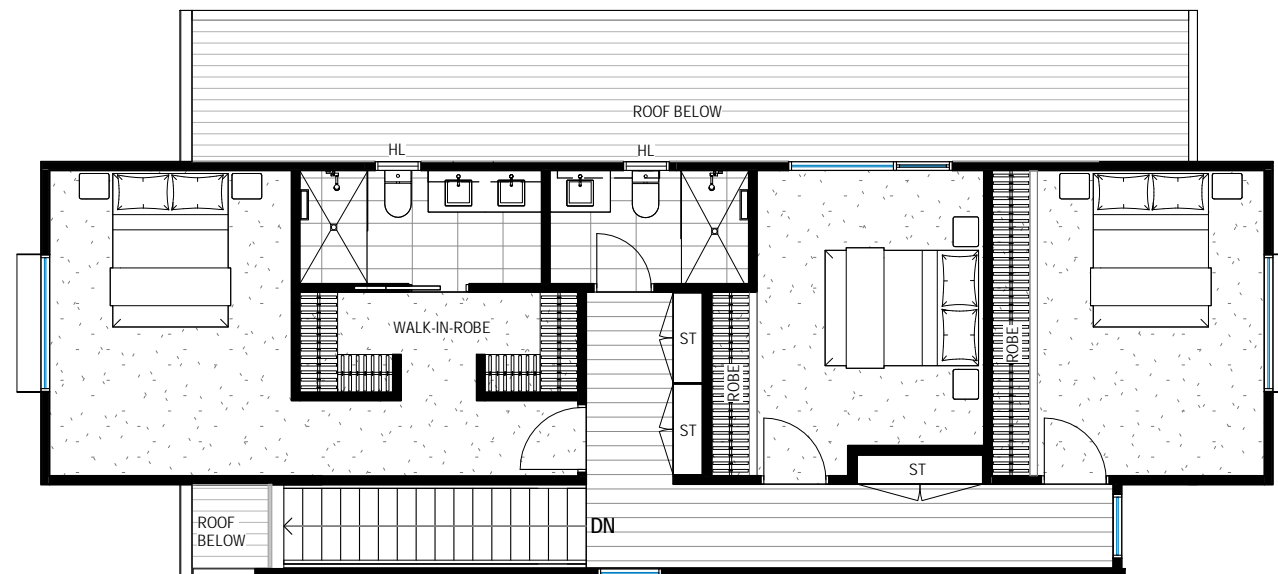
BACKYARD



GROUND FLOOR PLAN



LEVEL 1 FLOOR PLAN



LEVEL 2 FLOOR PLAN

TOWNHOUSE

3027, 7001, 7014

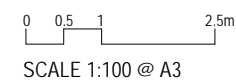
- BIN Wheelie bins storage area
- DW Dishwasher
- FR Fridge Cavity
- HL High level window
- MB Mail Box
- P Pantry
- PS Privacy Screening
- ST Storage
- ST* Low headroom storage

TYPE D
4 BED + 3 BATH

TOTAL	246m²
GROUND FLOOR	40.6m ²
LEVEL 1	59.8m ²
LEVEL 2	83.2m ²
GARAGE	38.7m ²
BALCONY	8.7m ²
BACKYARD PAVED AREA	15.0m ²

- NOTE:
- EXACT LOT SIZE VARIES
 - EXTENT OF LANDSCAPE AND DRIVEWAY SHOWN INDICATIVE
 - LOT SPECIFIC BALUSTRADE AND STAIRS TO BACKYARD NOT SHOWN FOR CLARITY
 - LOT SPECIFIC MIRRORED LAYOUT REFER TO SITE MASTERPLAN
 - BALCONY AND FACADE FINISH REFER TO FACADE TYPE

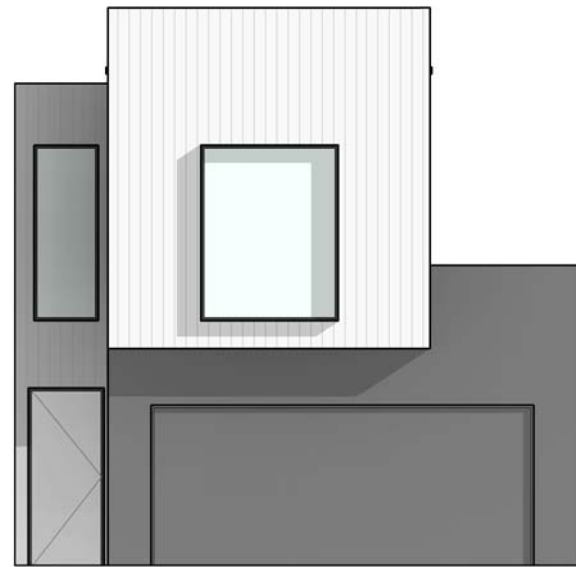
- While every effort has been made to ensure the information contained herein is correct at the time of issue, the enclosed information is subject to change at any time. This document does not form part of a contract of sale and purchasers should rely upon the contract of sale for all specifications and inclusions. All dimensions shown are indicative only and may vary to "as built".
 - All areas are measured in accordance with the Property Council of Australia Method of Measurement Residential
 - External balcony extents, external door and window configuration varies, refer to floor plates for details



PACE OF SUNSHINE NORTH
322 Duke Street

TOWNHOUSE TYPE DL
CORNER LOT WITH LEFT SIDE WINDOWS

0060
03.07.18



1 | D1 FRONT ELEVATION
1 : 100



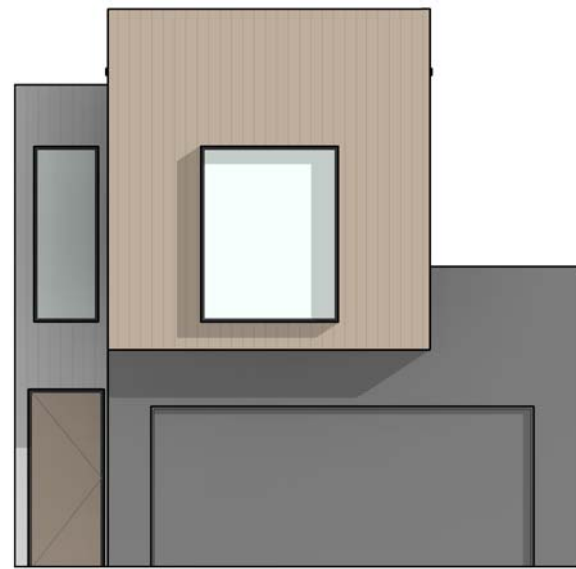
2 | D1 REAR ELEVATION
1 : 100

- While every effort has been made to ensure the information contained herein is correct at the time of issue, the enclosed information is subject to change at any time. This document does not form part of a contract of sale and purchasers should rely upon the contract of sale for all specifications and inclusions. All dimensions shown are indicative only and may vary to "as built".
- All areas are measured in accordance with the Property Council of Australia Method of Measurement Residential
- External balcony extents, external door and window configuration varies, refer to floor plates for details

PACE OF SUNSHINE NORTH
322 Duke Street

TOWNHOUSE TYPE D1

0060
03.07.18



1 | D2 FRONT ELEVATION
1 : 100



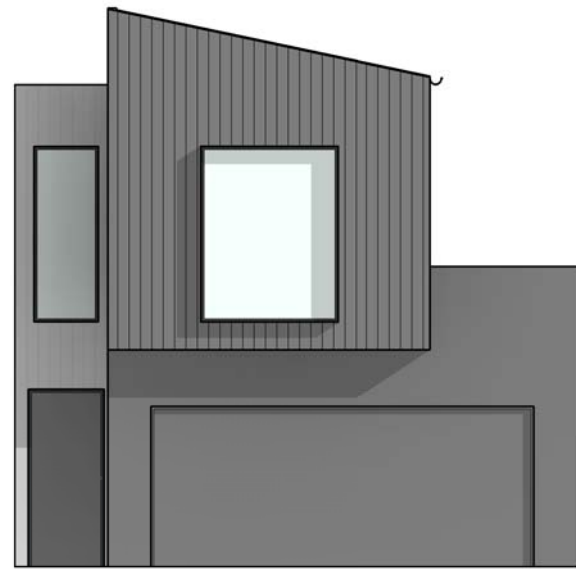
2 | D2 REAR ELEVATION
1 : 100

- While every effort has been made to ensure the information contained herein is correct at the time of issue, the enclosed information is subject to change at any time. This document does not form part of a contract of sale and purchasers should rely upon the contract of sale for all specifications and inclusions. All dimensions shown are indicative only and may vary to "as built".
- All areas are measured in accordance with the Property Council of Australia Method of Measurement Residential
- External balcony extents, external door and window configuration varies, refer to floor plates for details

PACE OF SUNSHINE NORTH
322 Duke Street

TOWNHOUSE TYPE D2

0060
03.07.18



1 | D3 FRONT ELEVATION
1 : 100



2 | D3 REAR ELEVATION
1 : 100

- While every effort has been made to ensure the information contained herein is correct at the time of issue, the enclosed information is subject to change at any time. This document does not form part of a contract of sale and purchasers should rely upon the contract of sale for all specifications and inclusions. All dimensions shown are indicative only and may vary to "as built".
- All areas are measured in accordance with the Property Council of Australia Method of Measurement Residential
- External balcony extents, external door and window configuration varies, refer to floor plates for details

PACE OF SUNSHINE NORTH
322 Duke Street

TOWNHOUSE TYPE D3

0060
03.07.18