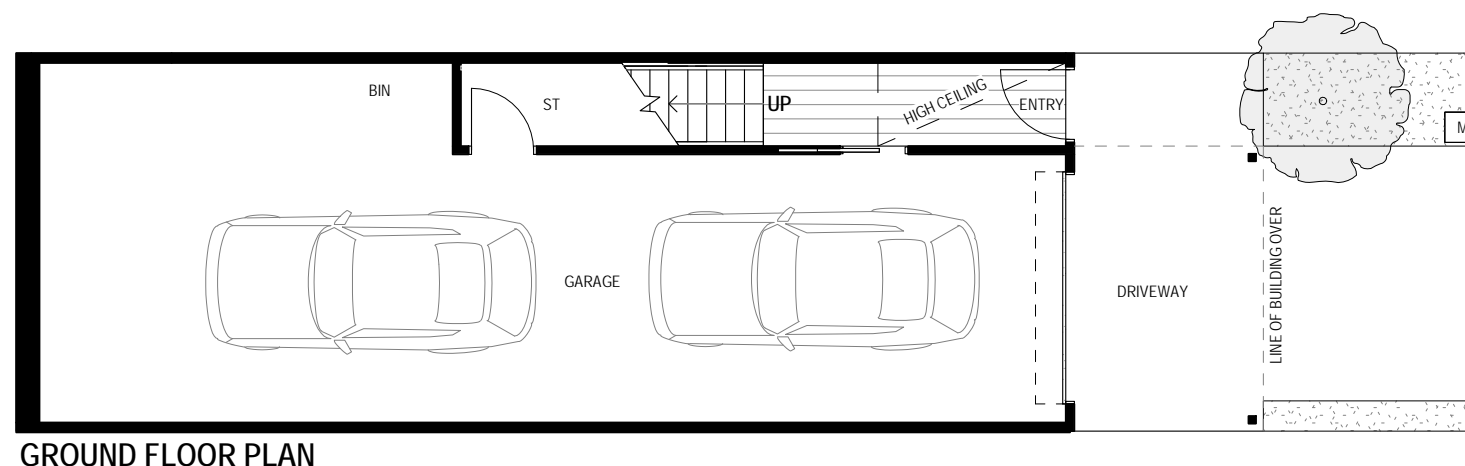


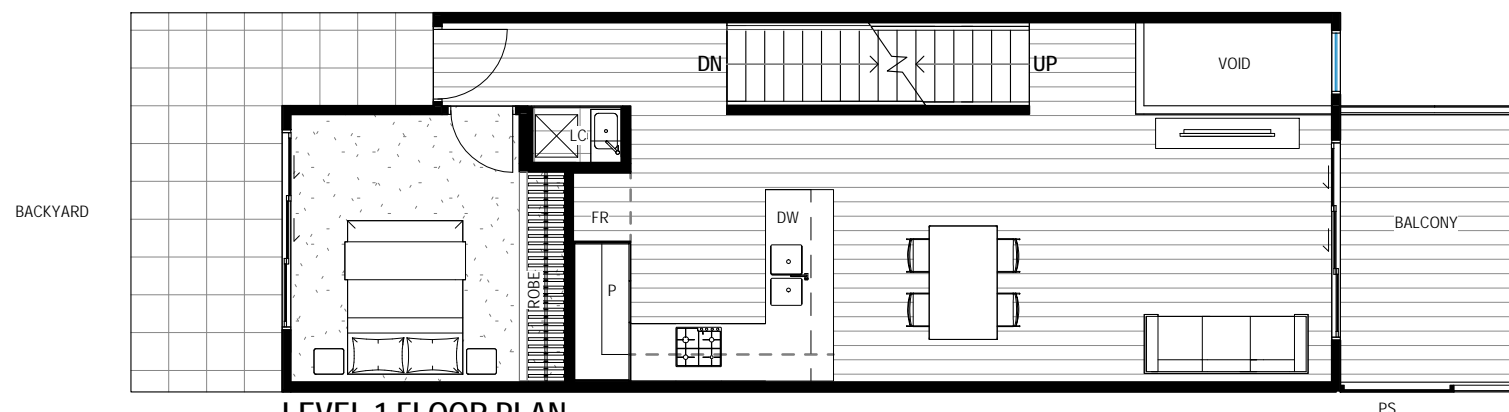
TOWNHOUSE

2026, 2027, 2028, 2029, 2030, 2031, 2032, 2033, 2034, 2035, 2036, 2037, 3016, 3017, 3018, 3019, 3020, 3021, 3022, 3023, 3024, 3025, 6023, 6024, 6025, 6026, 6027, 6028, 6029, 6030, 6031, 6032, 6033, 6034, 6035, 6036, 6037, 6038, 6039, 6040, 7016, 7017, 7018, 7019, 7020, 7021, 7022, 7023, 7024, 7025, 7026, 7027, 7028, 7029

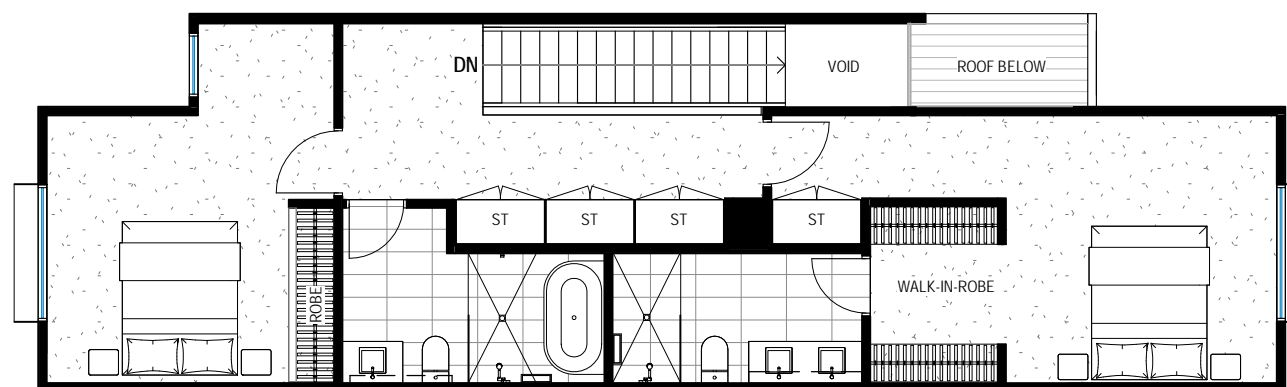
- BIN Wheelie bins storage area
- DW Dishwasher
- FR Fridge Cavity
- LC Laundry Cupboard
- MB Mail Box
- P Pantry
- PS Privacy Screening
- ST Storage



GROUND FLOOR PLAN



LEVEL 1 FLOOR PLAN



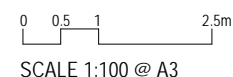
LEVEL 2 FLOOR PLAN

TYPE E
3 BED + 2 BATH

TOTAL	228.6m²
GROUND FLOOR	11.0m ²
LEVEL 1	64.6m ²
LEVEL 2	71.9m ²
GARAGE	59.2m ²
BALCONY	9.4m ²
BACKYARD PAVED AREA	12.5m ²

- NOTE:**
- EXACT LOT SIZE VARIES
 - EXTENT OF LANDSCAPE AND DRIVEWAY SHOWN INDICATIVE
 - LOT SPECIFIC BALUSTRADE AND STAIRS TO BACKYARD NOT SHOWN FOR CLARITY
 - LOT SPECIFIC MIRRORRED LAYOUT REFER TO SITE MASTERPLAN
 - BALCONY AND FACADE FINISH REFER TO FACADE TYPE

- While every effort has been made to ensure the information contained herein is correct at the time of issue, the enclosed information is subject to change at any time. This document does not form part of a contract of sale and purchasers should rely upon the contract of sale for all specifications and inclusions. All dimensions shown are indicative only and may vary to "as built".
 - All areas are measured in accordance with the Property Council of Australia Method of Measurement Residential
 - External balcony extents, external door and window configuration varies, refer to floor plates for details



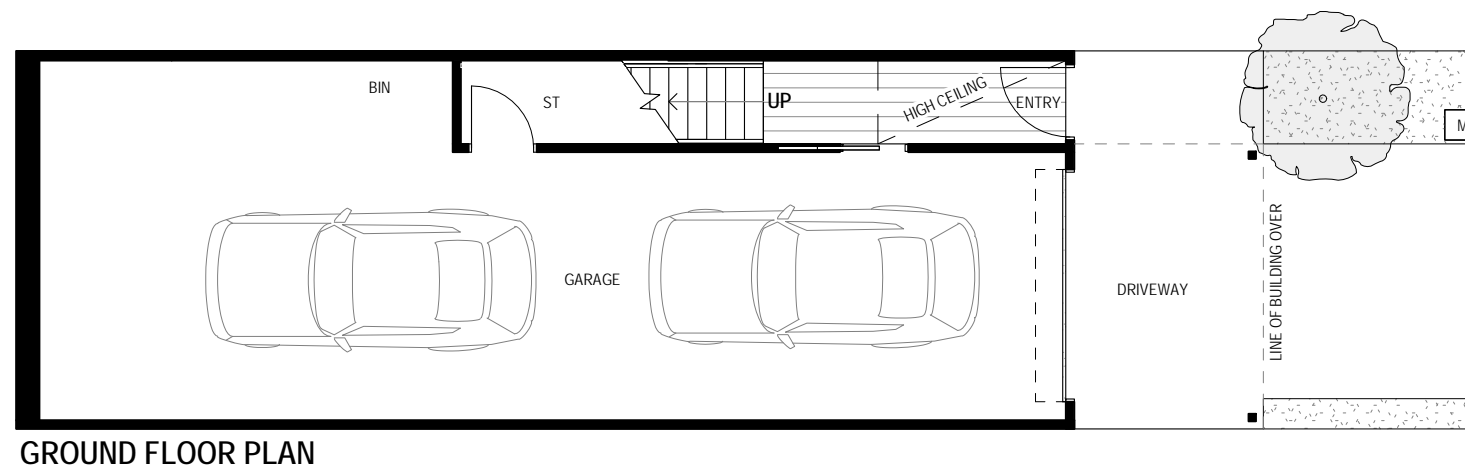
PACE OF SUNSHINE NORTH
322 Duke Street

TOWNHOUSE TYPE E

0060
03.07.18

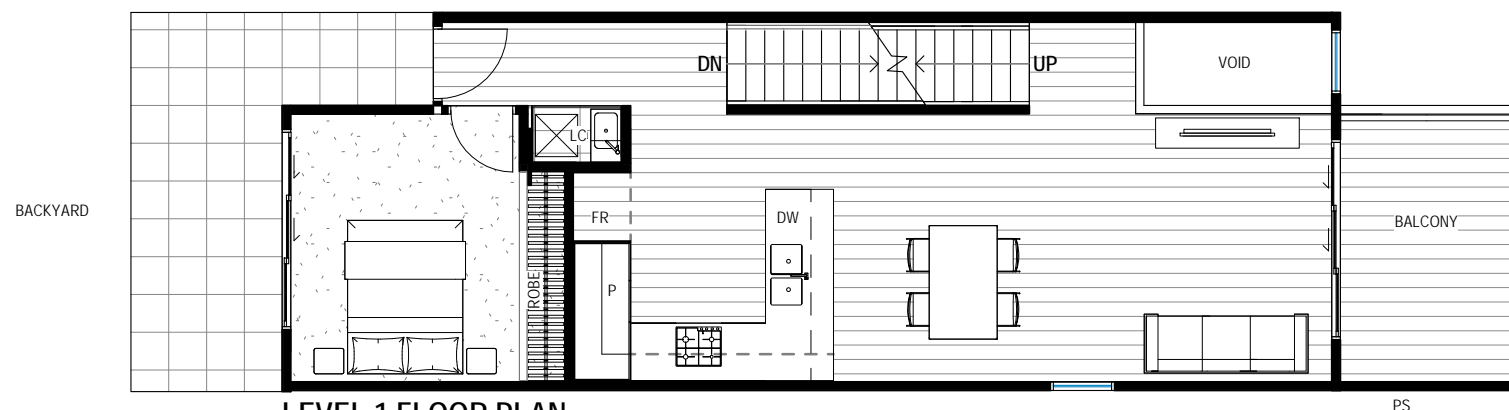
TOWNHOUSE

6041



GROUND FLOOR PLAN

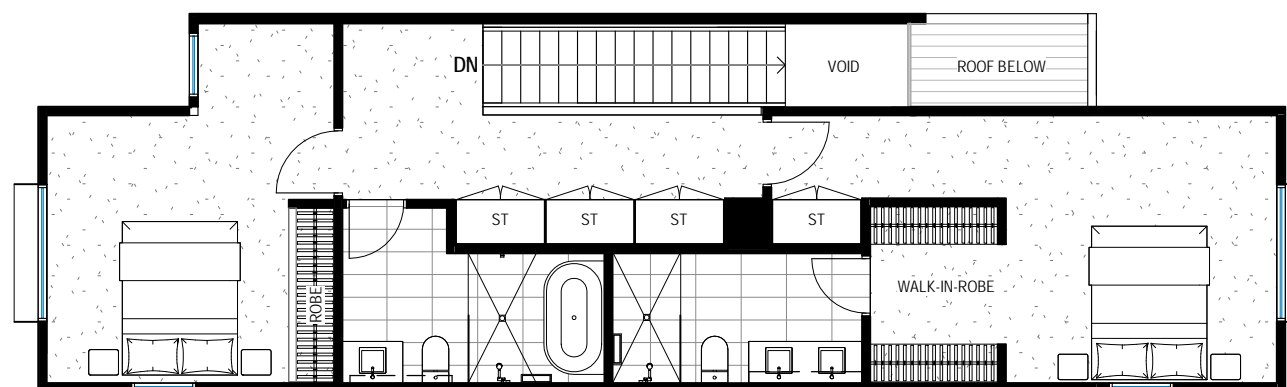
- BIN Wheelie bins storage area
- DW Dishwasher
- FR Fridge Cavity
- LC Laundry Cupboard
- MB Mail Box
- P Pantry
- PS Privacy Screening
- ST Storage



LEVEL 1 FLOOR PLAN

TYPE E
3 BED + 2 BATH

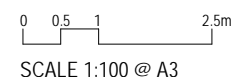
TOTAL	228.6m ²
GROUND FLOOR	11.0m ²
LEVEL 1	64.6m ²
LEVEL 2	71.9m ²
GARAGE	59.2m ²
BALCONY	9.4m ²
BACKYARD PAVED AREA	12.5m ²



LEVEL 2 FLOOR PLAN

- NOTE:
- EXACT LOT SIZE VARIES
 - EXTENT OF LANDSCAPE AND DRIVEWAY SHOWN INDICATIVE
 - LOT SPECIFIC BALUSTRADE AND STAIRS TO BACKYARD NOT SHOWN FOR CLARITY
 - LOT SPECIFIC MIRRORED LAYOUT REFER TO SITE MASTERPLAN
 - BALCONY AND FACADE FINISH REFER TO FACADE TYPE

- While every effort has been made to ensure the information contained herein is correct at the time of issue, the enclosed information is subject to change at any time. This document does not form part of a contract of sale and purchasers should rely upon the contract of sale for all specifications and inclusions. All dimensions shown are indicative only and may vary to "as built".
 - All areas are measured in accordance with the Property Council of Australia Method of Measurement Residential
 - External balcony extents, external door and window configuration varies, refer to floor plates for details



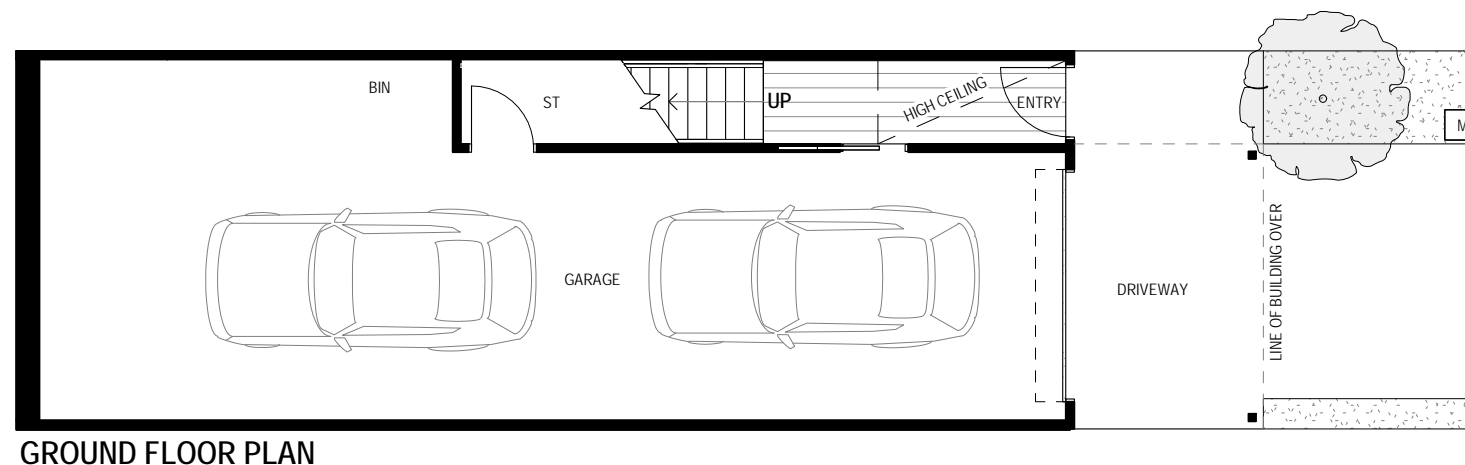
PACE OF SUNSHINE NORTH
322 Duke Street

TOWNHOUSE TYPE EL
CORNER LOT WITH LEFT SIDE WINDOWS

0060
03.07.18

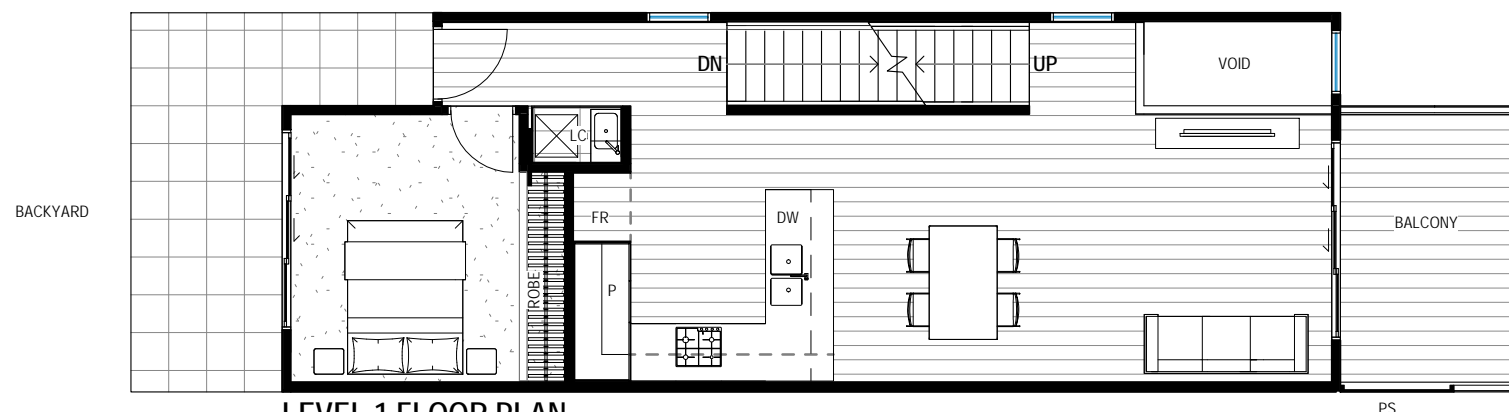
TOWNHOUSE

2038, 3026, 7015



GROUND FLOOR PLAN

BIN	Wheeler bins storage area
DW	Dishwasher
FR	Fridge Cavity
LC	Laundry Cupboard
MB	Mail Box
P	Pantry
PS	Privacy Screening
ST	Storage

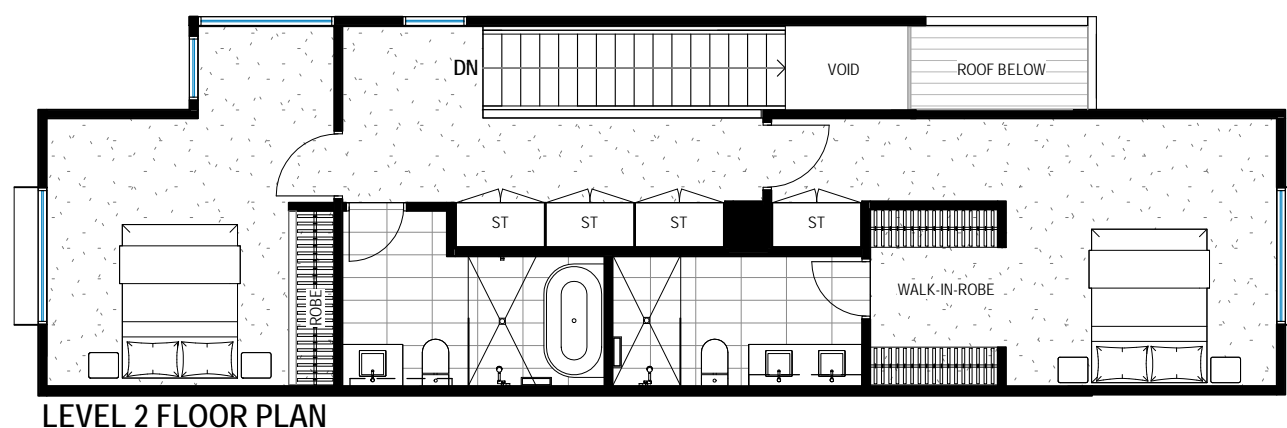


LEVEL 1 FLOOR PLAN

TYPE E
3 BED + 2 BATH

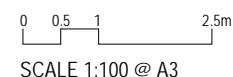
TOTAL	228.6m²
GROUND FLOOR	11.0m ²
LEVEL 1	64.6m ²
LEVEL 2	71.9m ²
GARAGE	59.2m ²
BALCONY	9.4m ²
BACKYARD PAVED AREA	12.5m ²

NOTE:
 - EXACT LOT SIZE VARIES
 - EXTENT OF LANDSCAPE AND DRIVEWAY SHOWN INDICATIVE
 - LOT SPECIFIC BALUSTRADE AND STAIRS TO BACKYARD NOT SHOWN FOR CLARITY
 - LOT SPECIFIC MIRRORED LAYOUT REFER TO SITE MASTERPLAN
 - BALCONY AND FACADE FINISH REFER TO FACADE TYPE



LEVEL 2 FLOOR PLAN

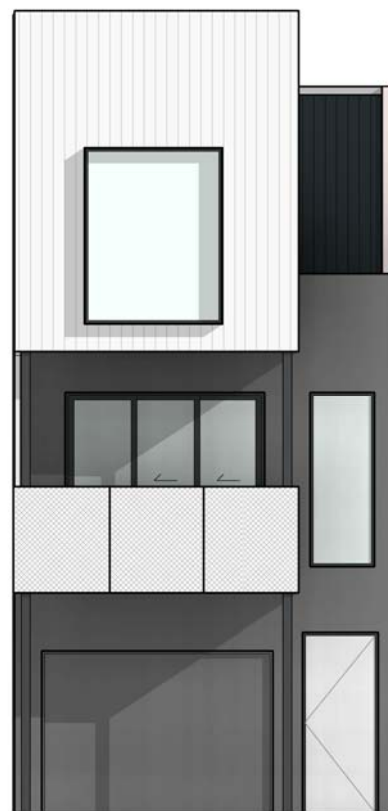
- While every effort has been made to ensure the information contained herein is correct at the time of issue, the enclosed information is subject to change at any time. This document does not form part of a contract of sale and purchasers should rely upon the contract of sale for all specifications and inclusions. All dimensions shown are indicative only and may vary to "as built".
 - All areas are measured in accordance with the Property Council of Australia Method of Measurement Residential
 - External balcony extents, external door and window configuration varies, refer to floor plates for details



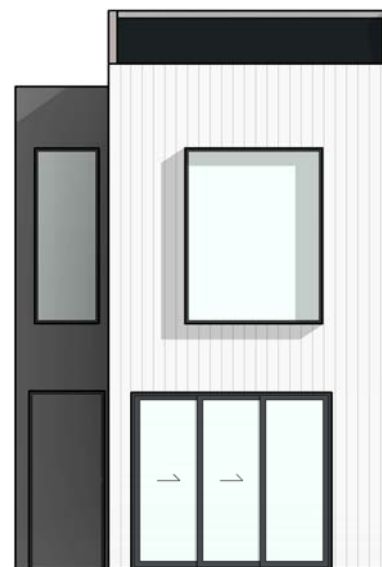
PACE OF SUNSHINE NORTH
322 Duke Street

TOWNHOUSE TYPE ER
CORNER LOT WITH RIGHT SIDE WINDOWS

0060
03.07.18

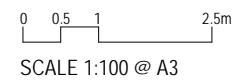


1 | E1 FRONT ELEVATION
1 : 100



2 | E1 REAR ELEVATION
1 : 100

- While every effort has been made to ensure the information contained herein is correct at the time of issue, the enclosed information is subject to change at any time. This document does not form part of a contract of sale and purchasers should rely upon the contract of sale for all specifications and inclusions. All dimensions shown are indicative only and may vary to "as built".
- All areas are measured in accordance with the Property Council of Australia Method of Measurement Residential
- External balcony extents, external door and window configuration varies, refer to floor plates for details



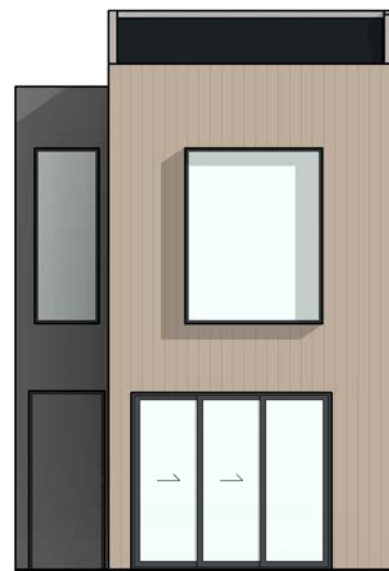
PACE OF SUNSHINE NORTH
322 Duke Street

TOWNHOUSE TYPE E1

0060
03.07.18

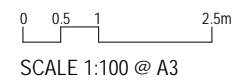


1 | E2 FRONT ELEVATION
1 : 100



2 | E2 REAR ELEVATION
1 : 100

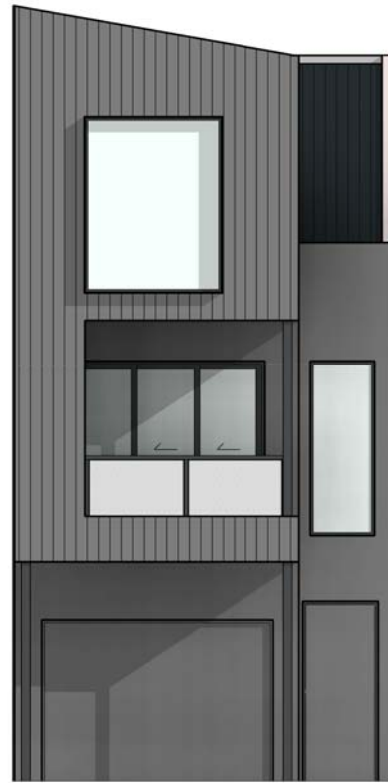
- While every effort has been made to ensure the information contained herein is correct at the time of issue, the enclosed information is subject to change at any time. This document does not form part of a contract of sale and purchasers should rely upon the contract of sale for all specifications and inclusions. All dimensions shown are indicative only and may vary to "as built".
- All areas are measured in accordance with the Property Council of Australia Method of Measurement Residential
- External balcony extents, external door and window configuration varies, refer to floor plates for details



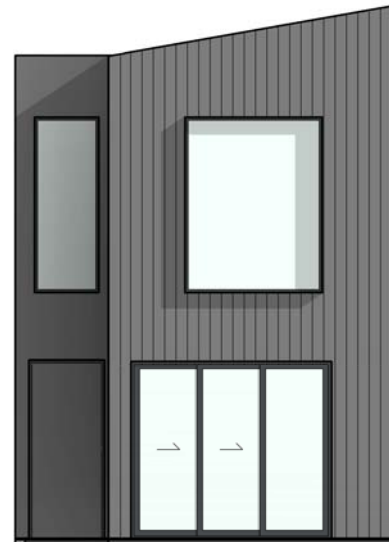
PACE OF SUNSHINE NORTH
322 Duke Street

TOWNHOUSE TYPE E2

0060
03.07.18

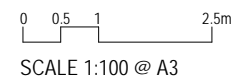


1 | E3 FRONT ELEVATION
1 : 100



2 | E3 REAR ELEVATION
1 : 100

- While every effort has been made to ensure the information contained herein is correct at the time of issue, the enclosed information is subject to change at any time. This document does not form part of a contract of sale and purchasers should rely upon the contract of sale for all specifications and inclusions. All dimensions shown are indicative only and may vary to "as built".
- All areas are measured in accordance with the Property Council of Australia Method of Measurement Residential
- External balcony extents, external door and window configuration varies, refer to floor plates for details



PACE OF SUNSHINE NORTH
322 Duke Street

TOWNHOUSE TYPE E3

0060
03.07.18