

TOWNHOUSE

3002, 3003, 3004, 3005, 3006, 3007, 3008, 3009, 3010, 3011, 3012, 3013, 3034, 3035, 3036, 3037, 3038, 3039, 3040, 3041, 3042, 3043, 3044, 4002, 4003, 4004, 4005, 4006, 4007, 4008, 4009, 4024, 4025, 4026, 4027, 4028, 6002, 6003, 6004, 6005, 6006, 6007, 6008, 6009, 6010, 6011, 6012, 6013, 6014, 6015

- BIN Wheelie bins storage area
- DW Dishwasher
- FR Fridge Cavity
- HL High level window
- LC Laundry Cupboard
- MB Mail Box
- P Pantry
- PS Privacy Screening
- ST Storage
- ST* Low headroom storage

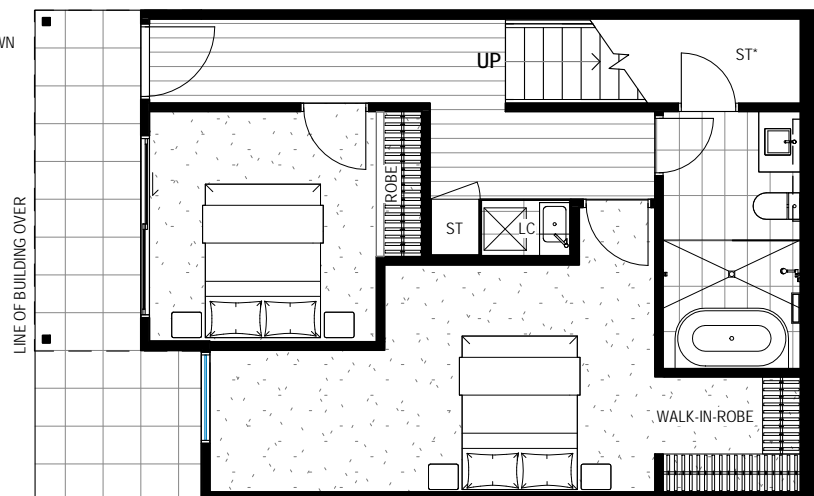
TYPE C
3 BED + 2 BATH

TOTAL	221.0m²
GROUND FLOOR	57.1m ²
LEVEL 1	60.0m ²
LEVEL 2	47.8m ²
GARAGE	22.9m ²
BALCONY	9.9m ²
BACKYARD PAVED AREA	10.7m ²
LEVEL 2 VOID AREA	12.6m ²

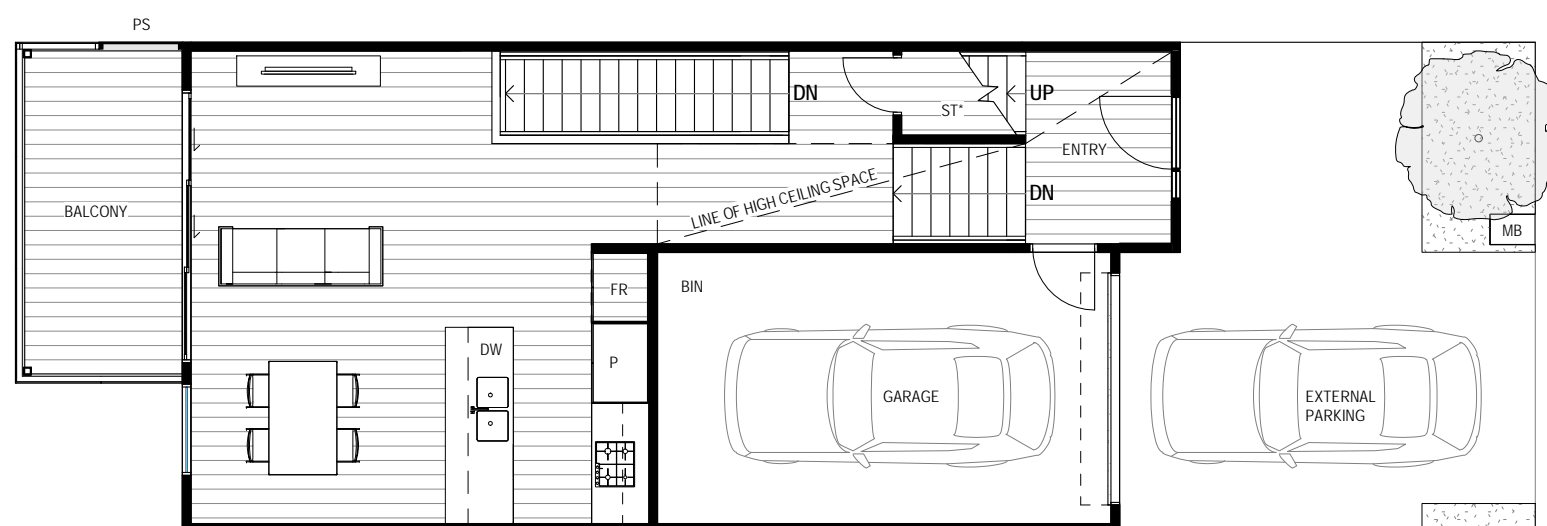
- NOTE:**
- EXACT LOT SIZE VARIES
 - EXTENT OF LANDSCAPE AND DRIVEWAY SHOWN INDICATIVE
 - LOT SPECIFIC BALUSTRADE AND STAIRS TO BACKYARD NOT SHOWN FOR CLARITY
 - LOT SPECIFIC MIRRORED LAYOUT REFER TO SITE MASTERPLAN
 - BALCONY AND FACADE FINISH REFER TO FACADE TYPE

NOTE: BALUSTRADE AND TIMBER STAIR STEP DOWN TO BACKYARD WILL BE PROVIDED AS REQUIRED TO SUIT SITE LEVELS

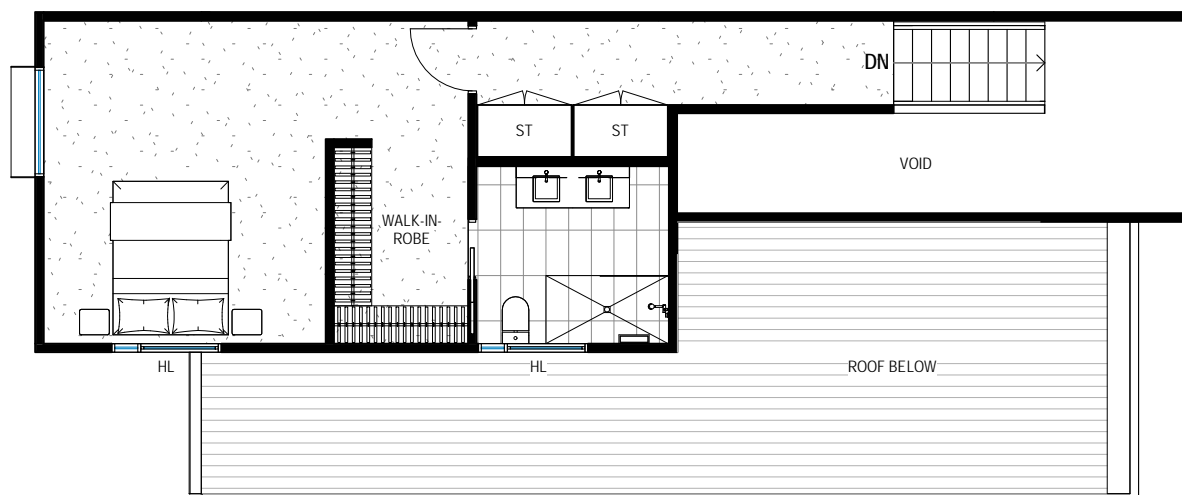
BACKYARD



GROUND FLOOR PLAN

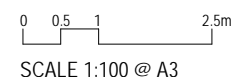


LEVEL 1 FLOOR PLAN



LEVEL 2 FLOOR PLAN

- While every effort has been made to ensure the information contained herein is correct at the time of issue, the enclosed information is subject to change at any time. This document does not form part of a contract of sale and purchasers should rely upon the contract of sale for all specifications and inclusions. All dimensions shown are indicative only and may vary to "as built".
- All areas are measured in accordance with the Property Council of Australia Method of Measurement Residential
- External balcony extents, external door and window configuration varies, refer to floor plates for details



PACE OF SUNSHINE NORTH
322 Duke Street

TOWNHOUSE TYPE C

0060
03.07.18

TOWNHOUSE

3014, 4010, 6001

- BIN Wheelie bins storage area
- DW Dishwasher
- FR Fridge Cavity
- HL High level window
- LC Laundry Cupboard
- MB Mail Box
- P Pantry
- PS Privacy Screening
- ST Storage
- ST* Low headroom storage

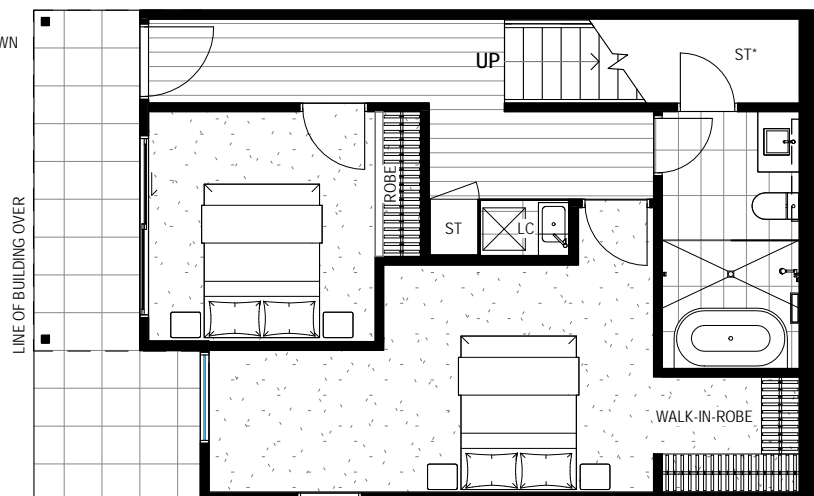
TYPE C
3 BED + 2 BATH

TOTAL	221.0m²
GROUND FLOOR	57.1m ²
LEVEL 1	60.0m ²
LEVEL 2	47.8m ²
GARAGE	22.9m ²
BALCONY	9.9m ²
BACKYARD PAVED AREA	10.7m ²
LEVEL 2 VOID AREA	12.6m ²

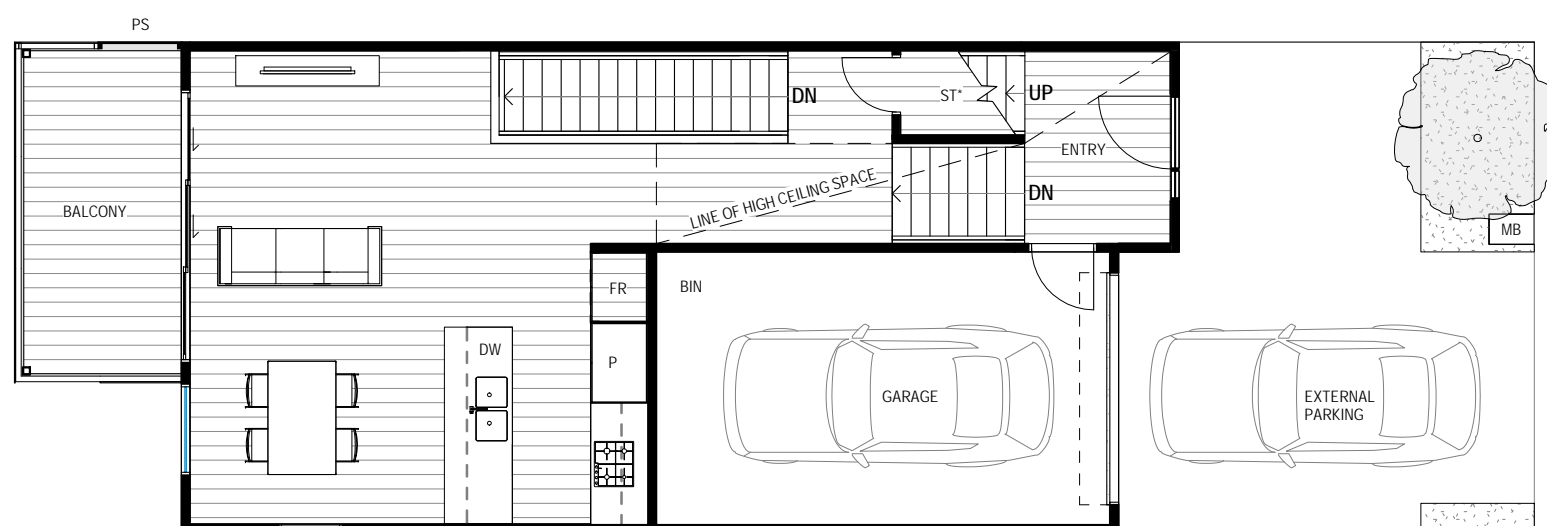
- NOTE:**
- EXACT LOT SIZE VARIES
 - EXTENT OF LANDSCAPE AND DRIVEWAY SHOWN INDICATIVE
 - LOT SPECIFIC BALUSTRADE AND STAIRS TO BACKYARD NOT SHOWN FOR CLARITY
 - LOT SPECIFIC MIRRORED LAYOUT REFER TO SITE MASTERPLAN
 - BALCONY AND FACADE FINISH REFER TO FACADE TYPE

NOTE: BALUSTRADE AND TIMBER STAIR STEP DOWN TO BACKYARD WILL BE PROVIDED AS REQUIRED TO SUIT SITE LEVELS

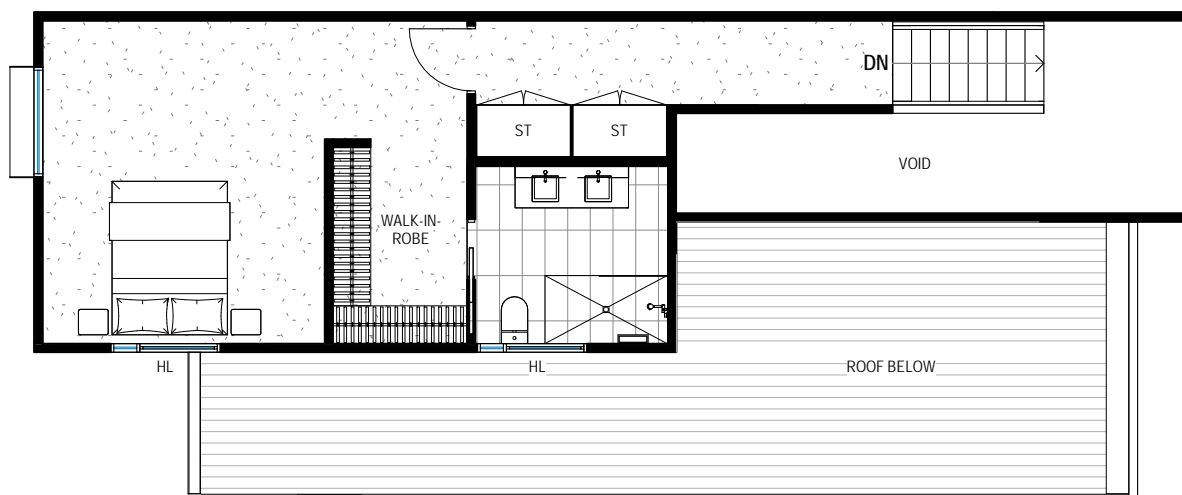
BACKYARD



GROUND FLOOR PLAN

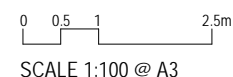


LEVEL 1 FLOOR PLAN



LEVEL 2 FLOOR PLAN

- While every effort has been made to ensure the information contained herein is correct at the time of issue, the enclosed information is subject to change at any time. This document does not form part of a contract of sale and purchasers should rely upon the contract of sale for all specifications and inclusions. All dimensions shown are indicative only and may vary to "as built".
 - All areas are measured in accordance with the Property Council of Australia Method of Measurement Residential
 - External balcony extents, external door and window configuration varies, refer to floor plates for details



PACE OF SUNSHINE NORTH
322 Duke Street

TOWNHOUSE TYPE CL
CORNER LOT WITH LEFT SIDE WINDOWS

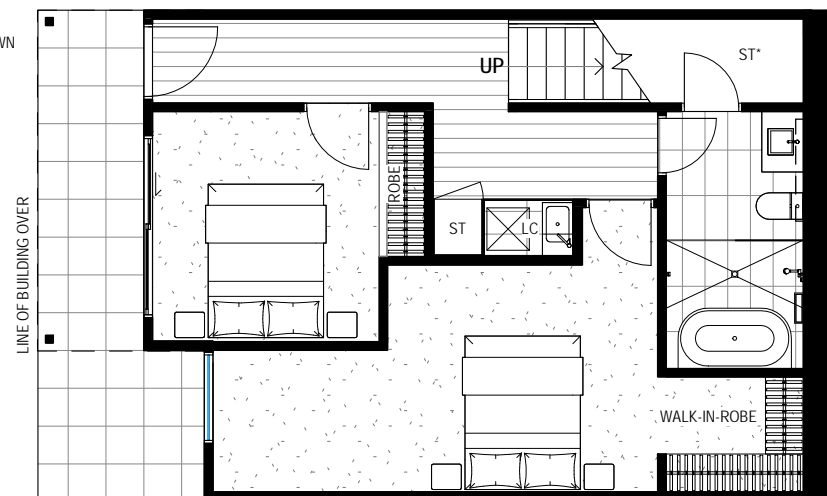
0060
03.07.18

TOWNHOUSE

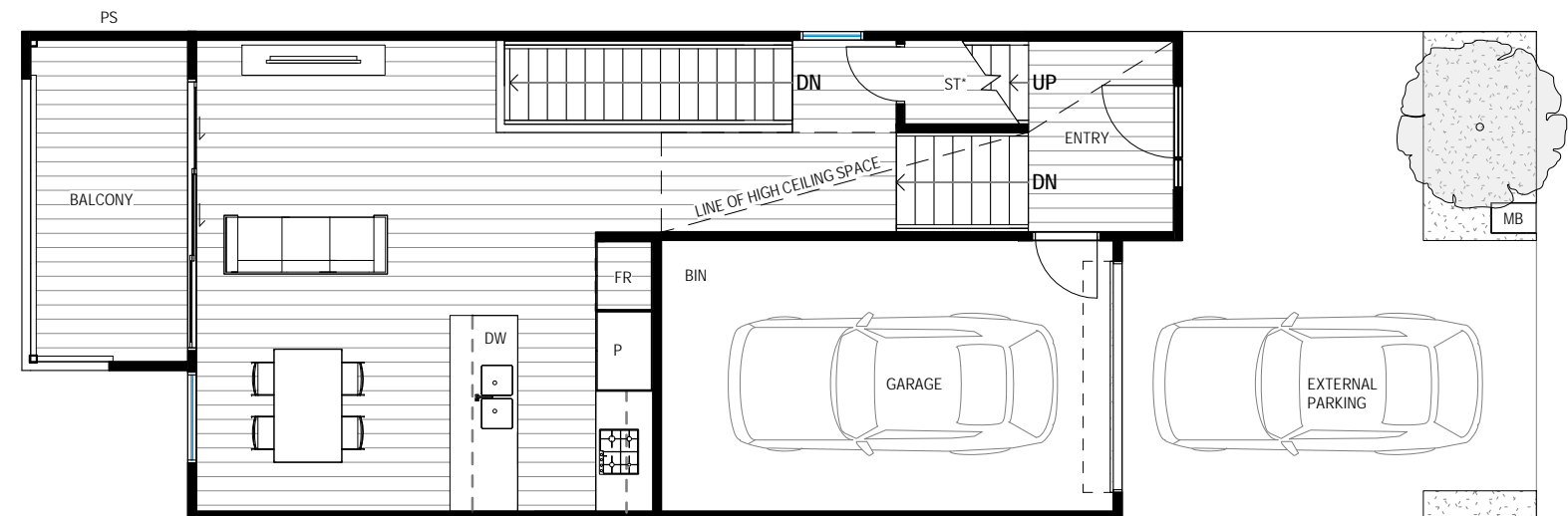
3001, 3045, 4001, 4023

NOTE: BALUSTRADE AND TIMBER STAIR STEP DOWN TO BACKYARD WILL BE PROVIDED AS REQUIRED TO SUIT SITE LEVELS

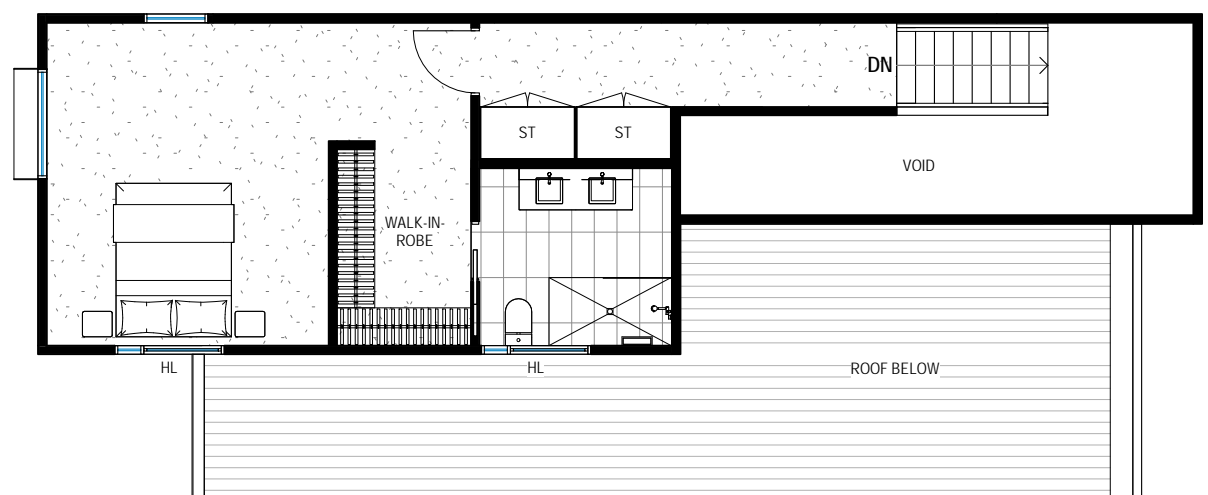
BACKYARD



GROUND FLOOR PLAN



LEVEL 1 FLOOR PLAN



LEVEL 2 FLOOR PLAN

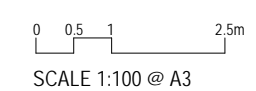
- BIN Wheelie bins storage area
- DW Dishwasher
- FR Fridge Cavity
- HL High level window
- LC Laundry Cupboard
- MB Mail Box
- P Pantry
- PS Privacy Screening
- ST Storage
- ST* Low headroom storage

TYPE C
3 BED + 2 BATH

TOTAL	221.0m²
GROUND FLOOR	57.1m ²
LEVEL 1	60.0m ²
LEVEL 2	47.8m ²
GARAGE	22.9m ²
BALCONY	9.9m ²
BACKYARD PAVED AREA	10.7m ²
LEVEL 2 VOID AREA	12.6m ²

- NOTE:
- EXACT LOT SIZE VARIES
 - EXTENT OF LANDSCAPE AND DRIVEWAY SHOWN INDICATIVE
 - LOT SPECIFIC BALUSTRADE AND STAIRS TO BACKYARD NOT SHOWN FOR CLARITY
 - LOT SPECIFIC MIRRORED LAYOUT REFER TO SITE MASTERPLAN
 - BALCONY AND FACADE FINISH REFER TO FACADE TYPE

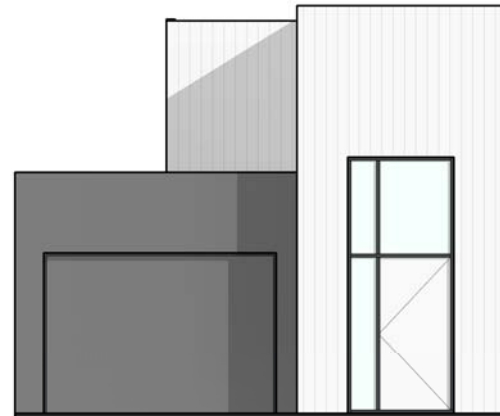
- While every effort has been made to ensure the information contained herein is correct at the time of issue, the enclosed information is subject to change at any time. This document does not form part of a contract of sale and purchasers should rely upon the contract of sale for all specifications and inclusions. All dimensions shown are indicative only and may vary to "as built".
 - All areas are measured in accordance with the Property Council of Australia Method of Measurement Residential
 - External balcony extents, external door and window configuration varies, refer to floor plates for details



PACE OF SUNSHINE NORTH
322 Duke Street

TOWNHOUSE TYPE CR
CORNER LOT WITH RIGHT SIDE WINDOWS

0060
03.07.18



1 | C1 FRONT ELEVATION
1 : 100



2 | C1 REAR ELEVATION
1 : 100

- While every effort has been made to ensure the information contained herein is correct at the time of issue, the enclosed information is subject to change at any time. This document does not form part of a contract of sale and purchasers should rely upon the contract of sale for all specifications and inclusions. All dimensions shown are indicative only and may vary to "as built".
- All areas are measured in accordance with the Property Council of Australia Method of Measurement Residential
- External balcony extents, external door and window configuration varies, refer to floor plates for details

PACE OF SUNSHINE NORTH
322 Duke Street

TOWNHOUSE TYPE C1

0060
03.07.18



1 | C2 FRONT ELEVATION
1 : 100



2 | C2 REAR ELEVATION
1 : 100

- While every effort has been made to ensure the information contained herein is correct at the time of issue, the enclosed information is subject to change at any time. This document does not form part of a contract of sale and purchasers should rely upon the contract of sale for all specifications and inclusions. All dimensions shown are indicative only and may vary to "as built".
- All areas are measured in accordance with the Property Council of Australia Method of Measurement Residential
- External balcony extents, external door and window configuration varies, refer to floor plates for details

PACE OF SUNSHINE NORTH
322 Duke Street

TOWNHOUSE TYPE C2

0060
03.07.18



1 | C3 FRONT ELEVATION
1 : 100



2 | C3 REAR ELEVATION
1 : 100

- While every effort has been made to ensure the information contained herein is correct at the time of issue, the enclosed information is subject to change at any time. This document does not form part of a contract of sale and purchasers should rely upon the contract of sale for all specifications and inclusions. All dimensions shown are indicative only and may vary to "as built".
- All areas are measured in accordance with the Property Council of Australia Method of Measurement Residential
- External balcony extents, external door and window configuration varies, refer to floor plates for details

PACE OF SUNSHINE NORTH
322 Duke Street

TOWNHOUSE TYPE C3

0060
03.07.18