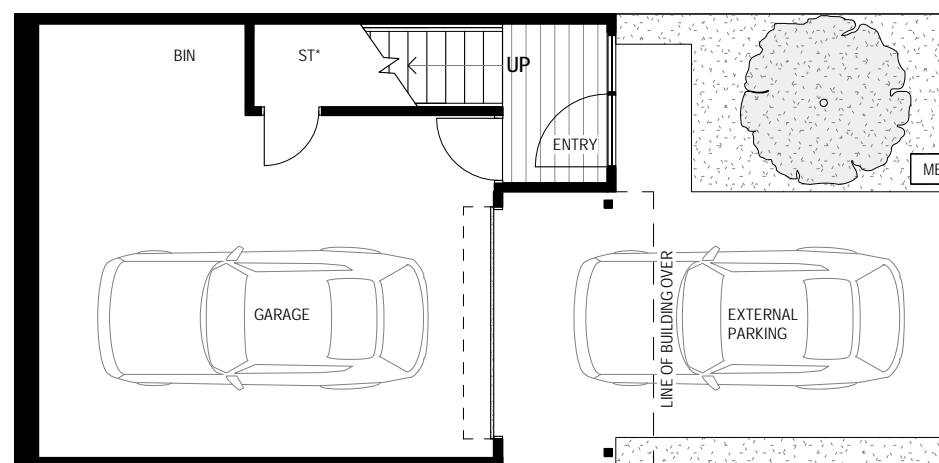


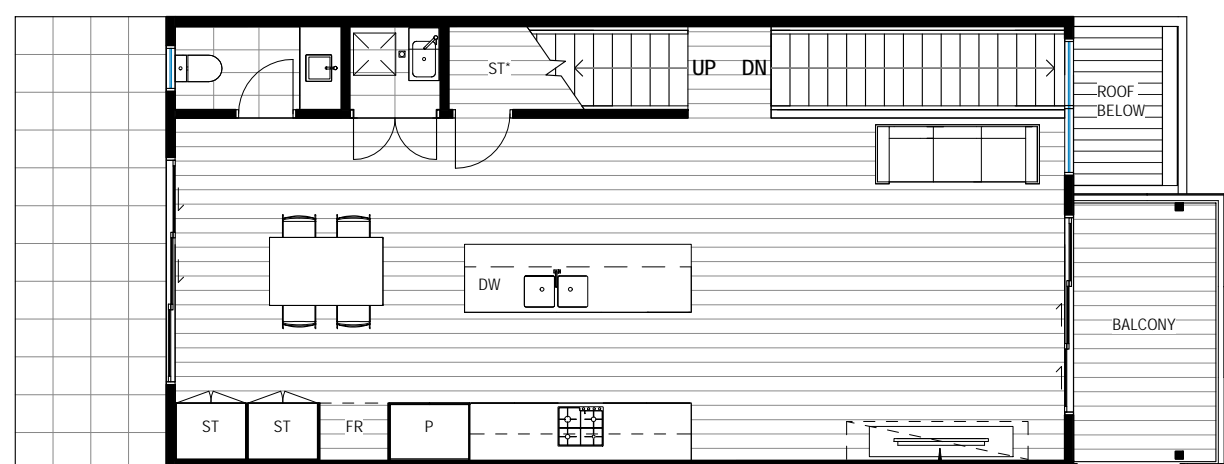
# TOWNHOUSE

2002, 2003, 2004, 2005, 2006, 2007, 2008, 2009, 2010, 2011, 2012, 2013, 2014, 2015, 2016, 2017, 2018, 2019, 2020, 2021, 2022, 2023, 2024, 2025, 6019, 6020, 6021, 6022



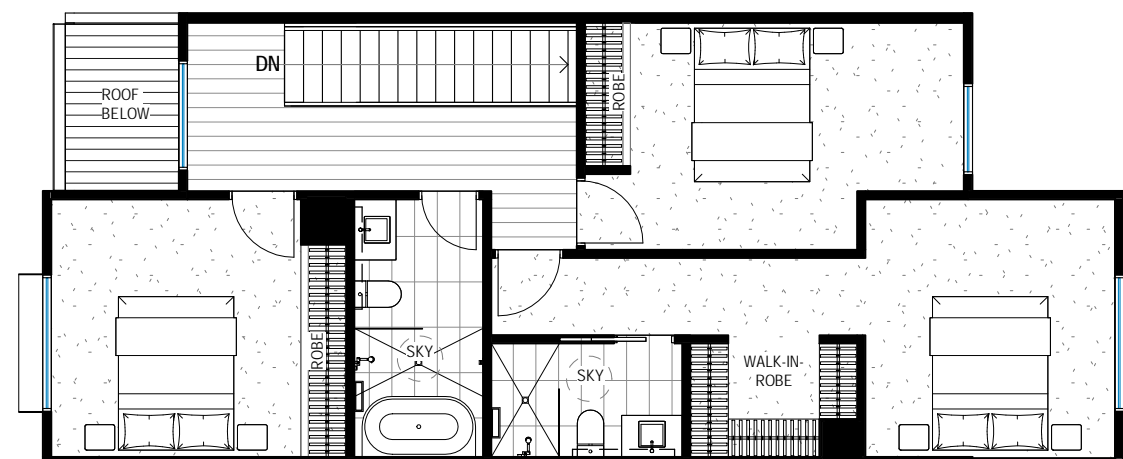
GROUND FLOOR PLAN

- BIN Wheelie bins storage area
- DW Dishwasher
- FR Fridge Cavity
- MB Mail Box
- P Pantry
- PS Privacy Screening
- SKY Bathroom Skylight
- ST Storage
- ST\* Low headroom storage



LEVEL 1 FLOOR PLAN

OPTIONAL FIREPLACE UPGRADE PS



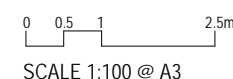
LEVEL 2 FLOOR PLAN

**TYPE B**  
3 BED + 2 BATH

|                     |                           |
|---------------------|---------------------------|
| <b>TOTAL</b>        | <b>210.5m<sup>2</sup></b> |
| GROUND FLOOR        | 3.5m <sup>2</sup>         |
| LEVEL 1             | 72.0m <sup>2</sup>        |
| LEVEL 2             | 77.0m <sup>2</sup>        |
| GARAGE              | 38.7m <sup>2</sup>        |
| BALCONY             | 7.3m <sup>2</sup>         |
| BACKYARD PAVED AREA | 12.0m <sup>2</sup>        |

- NOTE:**
- EXACT LOT SIZE VARIES
  - EXTENT OF LANDSCAPE AND DRIVEWAY SHOWN INDICATIVE
  - LOT SPECIFIC BALUSTRADE AND STAIRS TO BACKYARD NOT SHOWN FOR CLARITY
  - LOT SPECIFIC MIRRORED LAYOUT REFER TO SITE MASTERPLAN
  - BALCONY AND FACADE FINISH REFER TO FACADE TYPE

- While every effort has been made to ensure the information contained herein is correct at the time of issue, the enclosed information is subject to change at any time. This document does not form part of a contract of sale and purchasers should rely upon the contract of sale for all specifications and inclusions. All dimensions shown are indicative only and may vary to "as built".  
 - All areas are measured in accordance with the Property Council of Australia Method of Measurement Residential  
 - External balcony extents, external door and window configuration varies, refer to floor plates for details



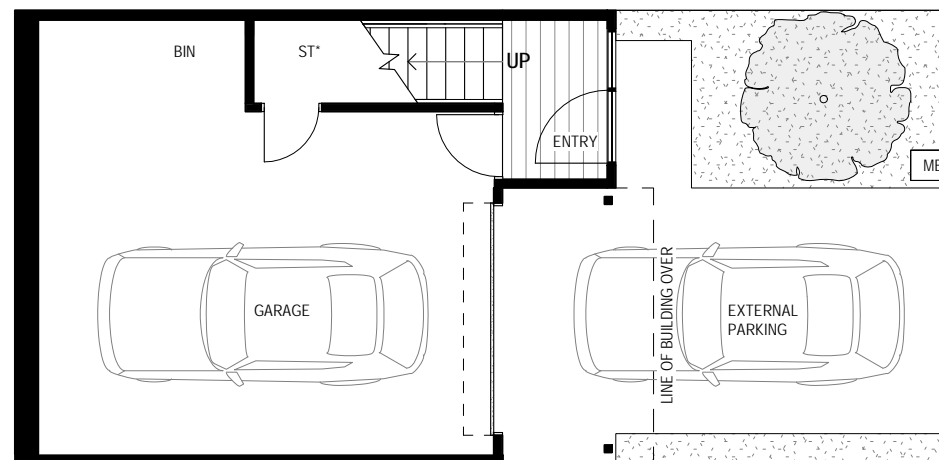
**PACE OF SUNSHINE NORTH**  
322 Duke Street

**TOWNHOUSE TYPE B**

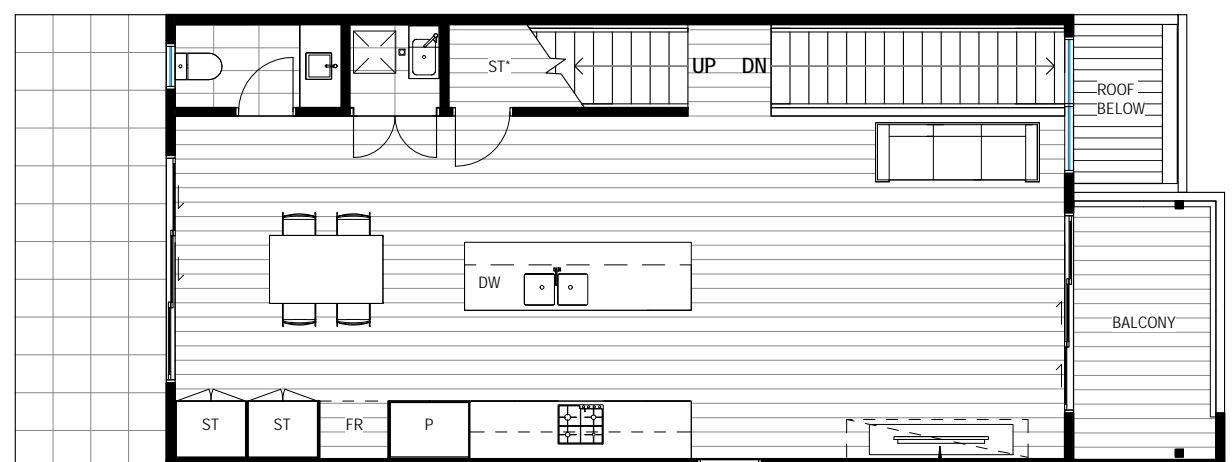
**0060**  
**03.07.18**

# TOWNHOUSE

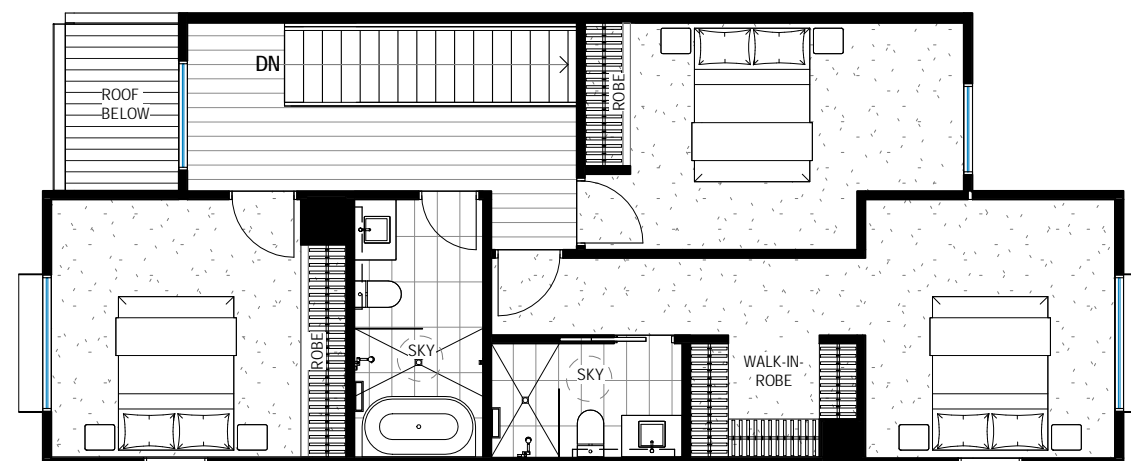
2001



GROUND FLOOR PLAN



LEVEL 1 FLOOR PLAN



LEVEL 2 FLOOR PLAN

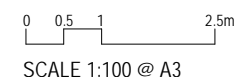
- BIN Wheelie bins storage area
- DW Dishwasher
- FR Fridge Cavity
- MB Mail Box
- P Pantry
- PS Privacy Screening
- SKY Bathroom Skylight
- ST Storage
- ST\* Low headroom storage

**TYPE B**  
3 BED + 2 BATH

|                     |                           |
|---------------------|---------------------------|
| <b>TOTAL</b>        | <b>210.5m<sup>2</sup></b> |
| GROUND FLOOR        | 3.5m <sup>2</sup>         |
| LEVEL 1             | 72.0m <sup>2</sup>        |
| LEVEL 2             | 77.0m <sup>2</sup>        |
| GARAGE              | 38.7m <sup>2</sup>        |
| BALCONY             | 7.3m <sup>2</sup>         |
| BACKYARD PAVED AREA | 12.0m <sup>2</sup>        |

- NOTE:**
- EXACT LOT SIZE VARIES
  - EXTENT OF LANDSCAPE AND DRIVEWAY SHOWN INDICATIVE
  - LOT SPECIFIC BALUSTRADE AND STAIRS TO BACKYARD NOT SHOWN FOR CLARITY
  - LOT SPECIFIC MIRRORED LAYOUT REFER TO SITE MASTERPLAN
  - BALCONY AND FACADE FINISH REFER TO FACADE TYPE

- While every effort has been made to ensure the information contained herein is correct at the time of issue, the enclosed information is subject to change at any time. This document does not form part of a contract of sale and purchasers should rely upon the contract of sale for all specifications and inclusions. All dimensions shown are indicative only and may vary to "as built".  
 - All areas are measured in accordance with the Property Council of Australia Method of Measurement Residential  
 - External balcony extents, external door and window configuration varies, refer to floor plates for details



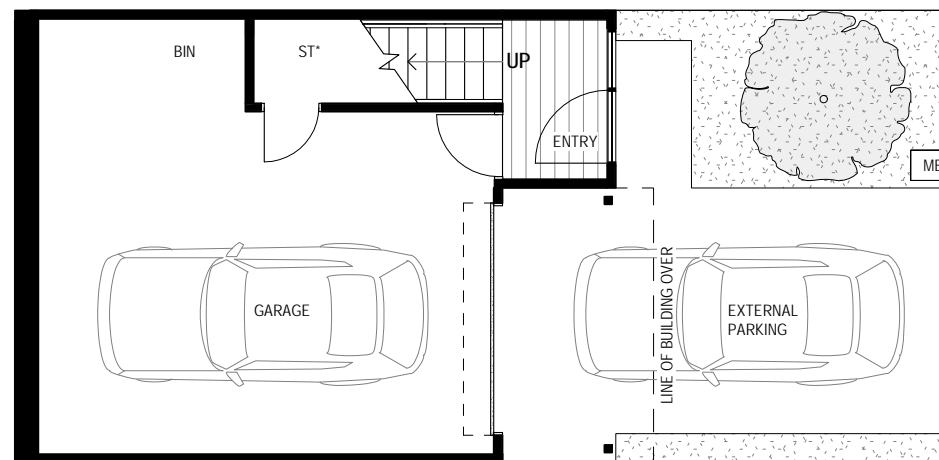
**PACE OF SUNSHINE NORTH**  
322 Duke Street

**TOWNHOUSE TYPE B1**  
CORNER LOT WITH LEFT SIDE WINDOWS

**0060**  
**03.07.18**

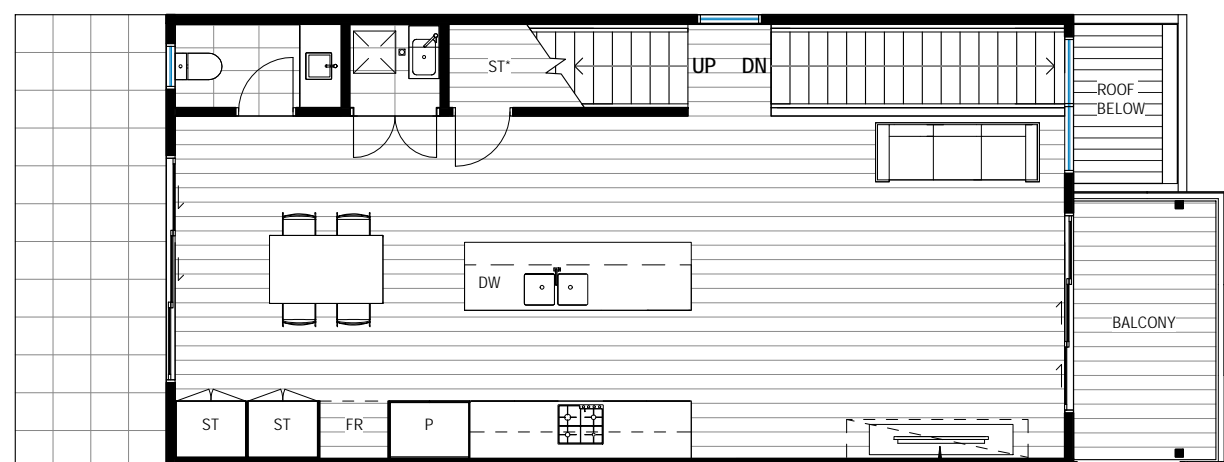
# TOWNHOUSE

6018



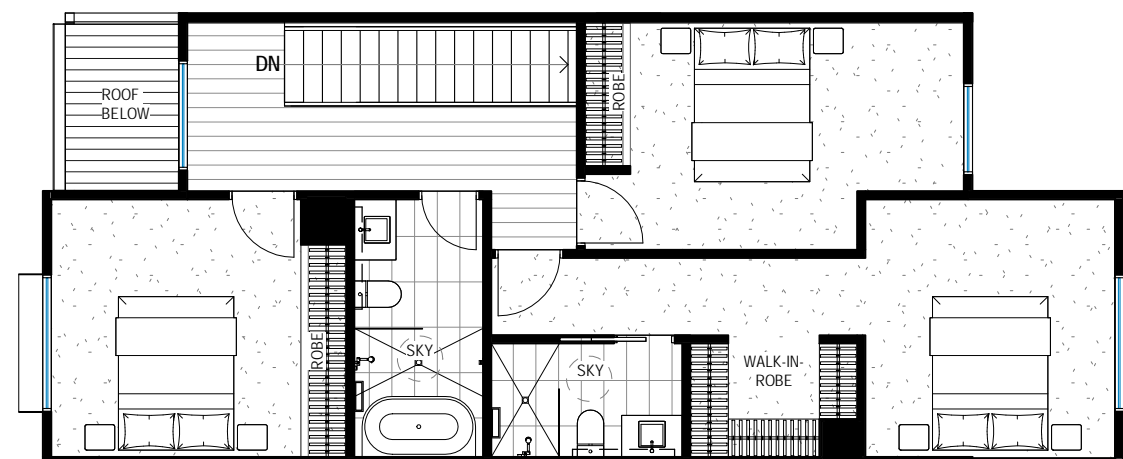
GROUND FLOOR PLAN

- BIN Wheelie bins storage area
- DW Dishwasher
- FR Fridge Cavity
- MB Mail Box
- P Pantry
- PS Privacy Screening
- SKY Bathroom Skylight
- ST Storage
- ST\* Low headroom storage



LEVEL 1 FLOOR PLAN

OPTIONAL FIREPLACE UPGRADE PS



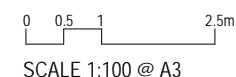
LEVEL 2 FLOOR PLAN

**TYPE B**  
3 BED + 2 BATH

|                     |                           |
|---------------------|---------------------------|
| <b>TOTAL</b>        | <b>210.5m<sup>2</sup></b> |
| GROUND FLOOR        | 3.5m <sup>2</sup>         |
| LEVEL 1             | 72.0m <sup>2</sup>        |
| LEVEL 2             | 77.0m <sup>2</sup>        |
| GARAGE              | 38.7m <sup>2</sup>        |
| BALCONY             | 7.3m <sup>2</sup>         |
| BACKYARD PAVED AREA | 12.0m <sup>2</sup>        |

- NOTE:**
- EXACT LOT SIZE VARIES
  - EXTENT OF LANDSCAPE AND DRIVEWAY SHOWN INDICATIVE
  - LOT SPECIFIC BALUSTRADE AND STAIRS TO BACKYARD NOT SHOWN FOR CLARITY
  - LOT SPECIFIC MIRRORED LAYOUT REFER TO SITE MASTERPLAN
  - BALCONY AND FACADE FINISH REFER TO FACADE TYPE

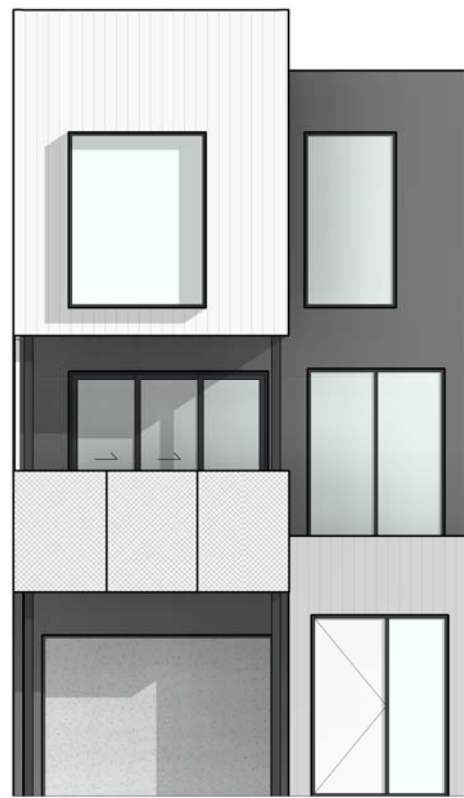
- While every effort has been made to ensure the information contained herein is correct at the time of issue, the enclosed information is subject to change at any time. This document does not form part of a contract of sale and purchasers should rely upon the contract of sale for all specifications and inclusions. All dimensions shown are indicative only and may vary to "as built".  
 - All areas are measured in accordance with the Property Council of Australia Method of Measurement Residential  
 - External balcony extents, external door and window configuration varies, refer to floor plates for details



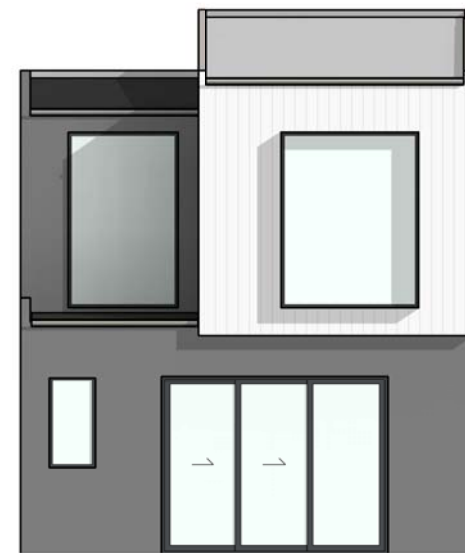
**PACE OF SUNSHINE NORTH**  
322 Duke Street

**TOWNHOUSE TYPE BR**  
CORNER LOT WITH RIGHT SIDE WINDOWS

**0060**  
**03.07.18**



1 | B1 FRONT ELEVATION  
1 : 100



2 | B1 REAR ELEVATION  
1 : 100

- While every effort has been made to ensure the information contained herein is correct at the time of issue, the enclosed information is subject to change at any time. This document does not form part of a contract of sale and purchasers should rely upon the contract of sale for all specifications and inclusions. All dimensions shown are indicative only and may vary to "as built".  
- All areas are measured in accordance with the Property Council of Australia Method of Measurement Residential  
- External balcony extents, external door and window configuration varies, refer to floor plates for details

0 0.5 1 2.5m  
SCALE 1:100 @ A3

PACE OF SUNSHINE NORTH  
322 Duke Street

TOWNHOUSE TYPE B1

0060  
03.07.18



1 | B2 FRONT ELEVATION  
1 : 100



2 | B2 REAR ELEVATION  
1 : 100

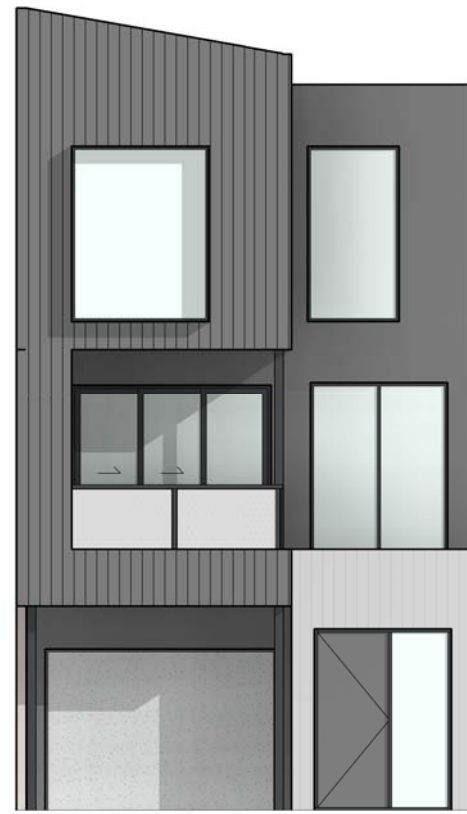
- While every effort has been made to ensure the information contained herein is correct at the time of issue, the enclosed information is subject to change at any time. This document does not form part of a contract of sale and purchasers should rely upon the contract of sale for all specifications and inclusions. All dimensions shown are indicative only and may vary to "as built".  
- All areas are measured in accordance with the Property Council of Australia Method of Measurement Residential  
- External balcony extents, external door and window configuration varies, refer to floor plates for details

0 0.5 1 2.5m  
SCALE 1:100 @ A3

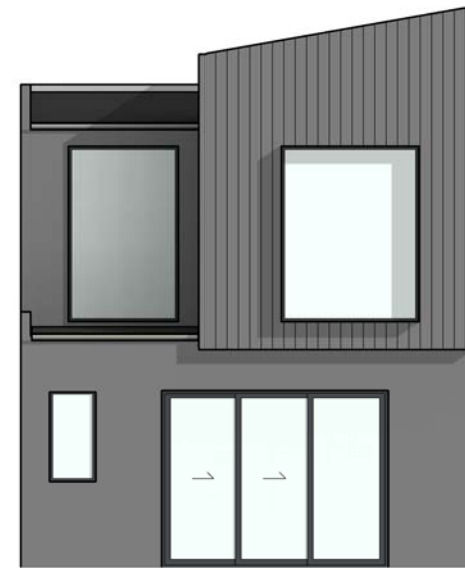
**PACE OF SUNSHINE NORTH**  
322 Duke Street

**TOWNHOUSE TYPE B2**

0060  
03.07.18



1 | B3 FRONT ELEVATION  
1 : 100



2 | B3 REAR ELEVATION  
1 : 100

- While every effort has been made to ensure the information contained herein is correct at the time of issue, the enclosed information is subject to change at any time. This document does not form part of a contract of sale and purchasers should rely upon the contract of sale for all specifications and inclusions. All dimensions shown are indicative only and may vary to "as built".  
 - All areas are measured in accordance with the Property Council of Australia Method of Measurement Residential  
 - External balcony extents, external door and window configuration varies, refer to floor plates for details

0 0.5 1 2.5m  
 SCALE 1:100 @ A3

**PACE OF SUNSHINE NORTH**  
 322 Duke Street

**TOWNHOUSE TYPE B3**

0060  
 03.07.18