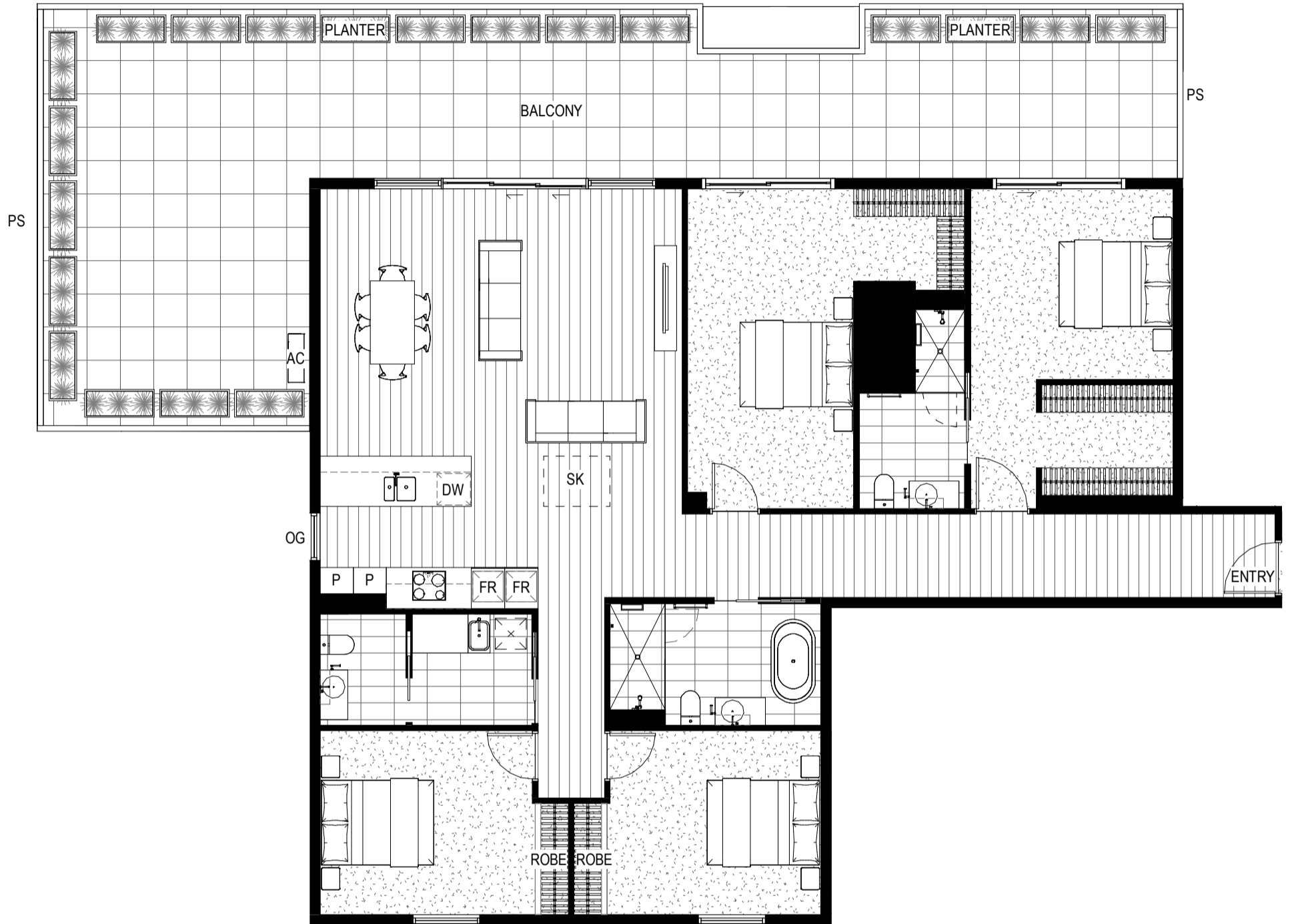
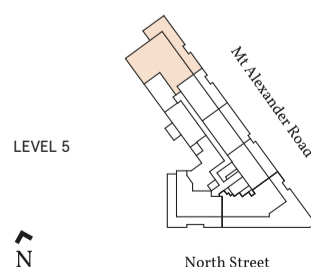


4 bedroom, 2.5 bathroom & 2 carpark



- AC A/C Condenser
- DW Dish Washer/Drawer
- FR Integrated Fridge
- OG Obscure Glazing
- P Pantry
- PS Privacy Screening
- SK Operable Skylight Above

Bedroom	4
Bathroom	2.5
Carpark	2
Internal area	177m ²
External area	85m ²
Total area	262m²



DISCLAIMER: All information, plans, dimensions, images, including artists impressions and computer-generated images herein whether by measurement or visual representation are for illustrative purposes only and do not constitute any representation by the Vendor or by its Agents or other representatives. No warranty is given either expressly or implied and all interested parties should not rely on the information contained herein. Statements, images, and representations are indicative only. Changes may be made during the further planning or development stages of any development and dimensions, fittings, finishes, ongoing costs and specifications and representations are subject to change without notice.

Whilst all reasonable care has been taken in providing this information, the Developer and its related companies and their representatives, consultants and agents accept no responsibility for the accuracy of any information contained herein or for any action taken in reliance thereon by any third party whether purchaser, potential purchaser or otherwise. The information contained in this material is a guide only and does not constitute an offer, inducement, representation, warranty or contract.

This document does not form part of a contract of sale and purchasers should rely upon the contract of sale for all specifications and inclusions.